

79 SERIES

GRAYSCALE COPY | PRINT | SCAN SYSTEM



Optimum Productivity

Experience the most advanced multifunction technology for technical documents

79 SERIES

Intelligent Toner Technology

KIP 79 G Series are the leading Production Class Systems for Technical Printing Professionals

14 D per Minute Solutions with 4 Media Rolls
Confidently complete projects ahead of schedule with 840 prints per hour. Superior reliability for high level performance.

The advanced technologies incorporated into KIP printers set the benchmark for proven quality and performance. This ensures that our printers deliver the highest quality and lowest cost of operation to help your company become more efficient, productive and profitable.

Higher Productivity | Automated Simplicity | Lower Cost
KIP 79 G Series systems deliver real measurable value and production system benefits including professional quality output, reliable performance, long-life durability and low cost operation.

Intelligent Toner Technology

- 15.6" True Smart Tablet Function Touchscreen
- Workflow Automation Templates
- Pictorial Operator Guides
- Smart Link QR Code Access to Operator Guides for Smart Phones
- Toner - High Definition Printing Technology
- Permanent Print Heads
- 100% Toner Efficient - no waste
- Large Capacity Toner Cartridges
- Low Cost of Operation
- Highest Image Durability
- Superior Productivity - Fast Consistent Speed Print Production
- Quick Paper Loading Technology
- High Speed File Processing
- Peace of Mind Data Security



**PROFESSIONAL
QUALITY**

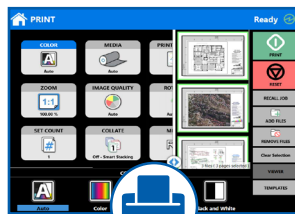
- Powerful Compact Printing Solutions
- Highest Build Quality for Long Life Durability
- Steel Frame Construction
- KIP System K Software is included
- Complimentary Software Upgrades
- 24/7 Access to Web Based Easy and Informative Software Tutorials
- Live Virtual Product Training to Keep Your Team Productive

KIP System K Software Suite



COPY

- Single Touch Copy
- Real-time Image Preview
- Recall Previous Jobs
- Simple Selection Enlargement/Reduction
- Area of Interest Editing
- Concurrent Copy and Scan



PRINT

- KIP System K Software Suite
- Advanced Browser Based Printing
- Preflight Thumbnail Viewer
- WHQL Windows Driver
- Print from Cloud Services
- Concurrent Print and Scan



SCAN

- Auto DeSkew
- Image Clean-up
- High Resolution Scanning
- Area of Interest Scanning
- Easy File Renaming
- Scan to Cloud Services



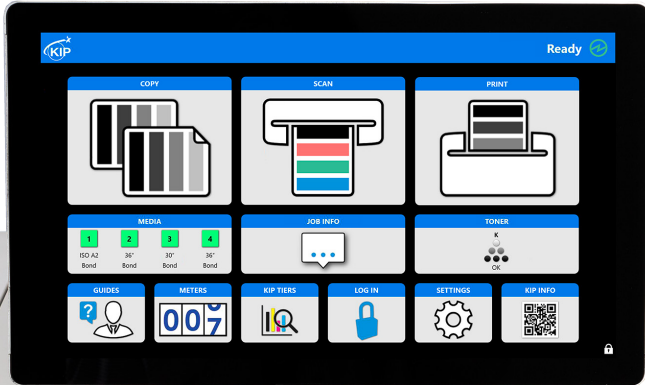
DATA SECURITY

- Image Overwrite - Data Shredding
- Removable Hard Drive
- KIP Accounting & Cost Center
- Virus Scanning
- Windows IoT - Data Encryption
- KIP Secure Print - User PIN

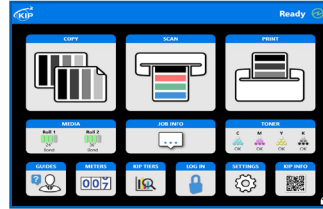
TRUE SMART TABLET PRODUCTIVITY

PRINT, COPY & SCAN BRILLIANTLY

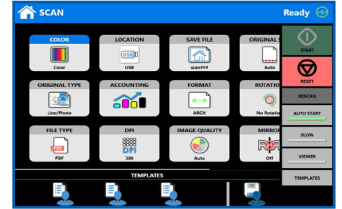
Perfect View High Definition
15.6" Smart Touchscreen



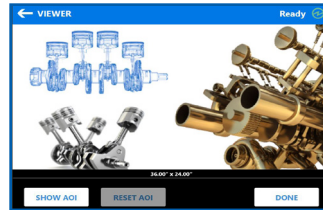
True smart tablet function that is easy for new or experienced users



Automated Workflow for Single Touch Simplicity



Intuitive Feature Selection



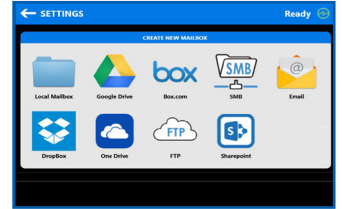
Real-time High Definition Image Preview



Area of Interest Image Editing



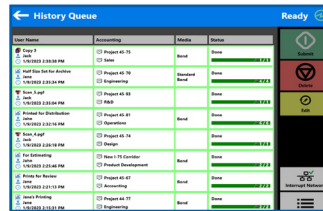
Auto De-skew for Copy & Scan



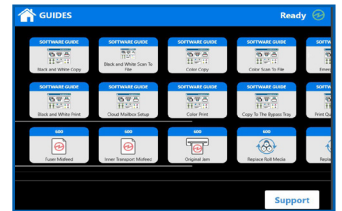
Cloud Connect

The KIP touchscreen has true smart tablet easy functions that offer unmatched productivity with intuitive features to brilliantly automate Print, Copy, and Scan workflow.

- Color scan to file with ability to edit line color
- Maximize efficiency - Copy and print or scan and print at the same time
- Interrupt large print runs for quick one-off prints or copies
- Preview high definition images in real-time
- KIP's Area of Interest on-screen editing let's you quickly print only the section of information you need
- Auto de-skew technology ensures the perfect scan or copy to enhance quality and workflow
- KIP Cloud Connect let's you print from or scan to cloud services for project collaboration anytime, anywhere
- Job history saves valuable time. No need to return to your desk to effortlessly print recent jobs
- On-screen pictorial user guides keep your team knowledgeable and productive
- Have a question about the KIP print system? Smart Phone and browser access by KIP Smart Link QR Code for quick answers from video shorts and PDF user guides.



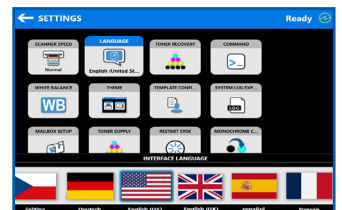
Job History



Pictorial Feature & Operator Guide

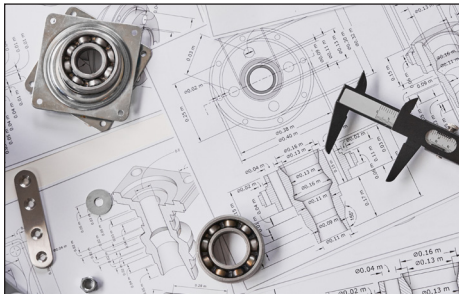


KIP Smart Link QR Code Access to Operator Guides for Smart Phones



One-Touch Access to Features in 12 Languages

High Definition Print (HDP) Technology



KIP HDP Technology redefines print quality standards for technical printing professionals

Monochrome images are printed with advanced grayscale accuracy and fine line image enhancement to satisfy the most exacting quality standards. KIP HDP technology is 100% toner efficient - no waste toner. KIP HDP reduces the cost of printing, saves significant money, and delivers industry leading low cost of ownership.

KIP print systems do not use imaging carriers or developers. Print quality is consistent and does not deteriorate over time as the carrier or developer wears. Developers and carriers are costly to replace impact landfills.

600 x 2400 dpi - High Resolution

Print quality to perfect every detail. KIP systems feature high resolution 600 x 2400 dpi printing for sharper details with distinctive grayscale gradients and halftones. KIP HDP image smoothing technology enhances curves, diagonal lines, and arcs by smoothing line edges with excellent precision.

Low Cost of Operation

- Saves up to 50% over legacy systems
- 100% toner efficient - no waste
- No use of costly developers or carriers
- KIP's permanent print head technology saves money and time vs expensive ink jet print heads that expire or fail
- The KIP 79 G Series produces high quality prints on lower cost plain bond paper. No special media required
- KIP systems have higher build quality for many years of reliable performance

Experience Superior Productivity

CONSISTENT SPEED TECHNOLOGY

- Save significant time and work more efficiently with Zero file spooling at local PCs
- Ultra fast file processing Windows IoT controller for true multitasking performance results
- Quad Core Processors and Solid State Hard Drives
- KIP 79 G Series systems deliver consistent print speeds of 840 prints per hour always at the highest quality setting
- Fast when you need it most. 40% faster printing production with 60% more toner than the KIP 71 G Series systems
- Confidently print unattended sets to effortlessly meet compressed project timelines so you can focus on more important priorities
- Flexibility and speed that accommodates high demand print runs and quick short runs in a single system
- Full Media Capacity of 4 x 500 ft rolls allows uninterrupted print runs up to 1000 D/A1 prints perfectly collated with the KIP 1200 Auto Stacker
- Auto Roll Switching provides less user intervention for superior productivity performance

Highest Image Durability

KIP systems deliver solid blacks, smooth grayscale and uniform print quality from the first to the last page of the print job.

- Instantly dry
- Highlighter safe
- Waterproof
- Smear-proof
- Lightfast outdoor fade resistant



CONFIGURATION VERSATILITY

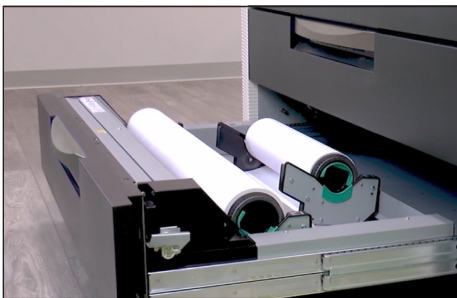
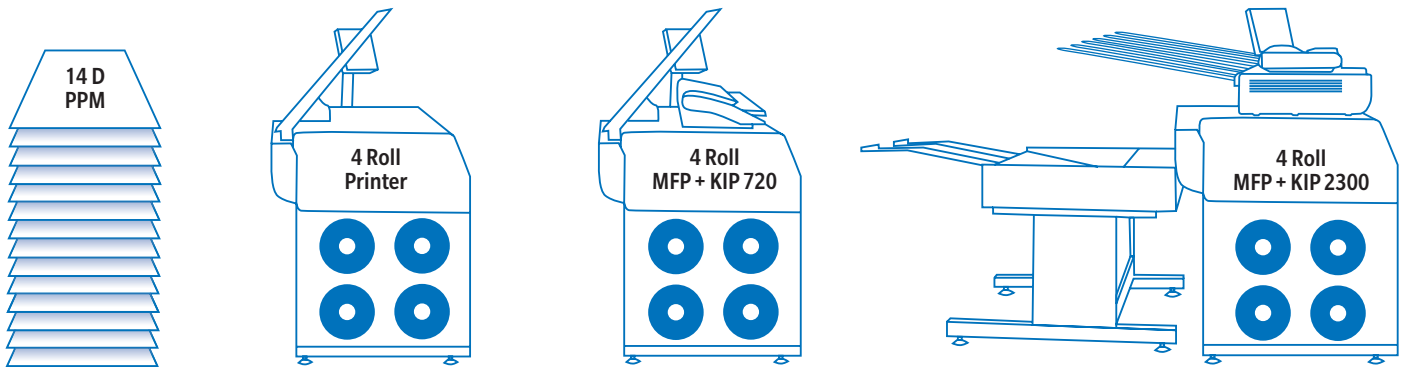


79 G SERIES

RANGE OF PRODUCTIVITY & CONFIGURATIONS

Rolls	Speed	Printer	MFP + KIP 720 Convenience Scanner	MFP + KIP 2300 Production Scanner
4 Roll	14D	✓	✓	✓

14 D PPM | 840 High Quality Prints per Hour



Media Capacity

Simple and fast paper loading in less than one minute versus up to several minutes on automated inkjet systems. KIP systems feature a user friendly "End-Cap" design for easy loading of media rolls. Media drawers are auto-switching to ensure non-stop print production, full job recovery, and feature maximum media versatility. Media status is displayed on the smart touchscreen and within the KIP System K software suite so out of paper surprises are not a part of your busy day.



Top & Rear Stacking

Top stacking up to 100 prints.
Optional KIP 1200 professional grade rear stacker system holds up to 1,000 perfectly collated prints.



The Color of KIP is Green

- Environmental aspects that make a difference
- Earth conscious. KIP G Series systems are 100% toner efficient, and do not use carriers or developer that impact landfills.
- Save energy - KIP 79 G Series turn on and off and are ready to work based on your schedule
- Energy saving sleeps modes can be based on clock or calendar - no need to leave the machine on 24/7
- Recycle KIP toner bottles in standard recycling bins
- Permanent print heads that do not dry out, clog or need to be thrown away

KIP System K Software

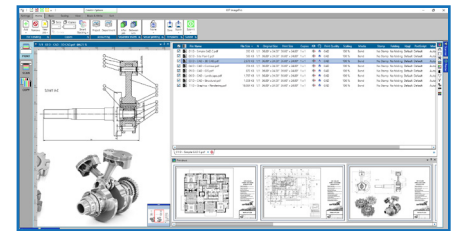
KIP System K Software Suite offers unmatched flexibility for printing projects.

The KIP System K Software Suite provides a uniform user interface whether you are scanning at the Touchscreen or printing from your computer.

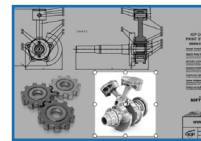


KIP ImagePro - Max Productivity with Best in Class Features

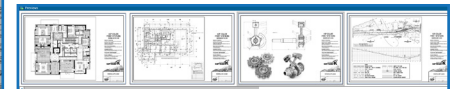
- Driverless PC App Printing
- High Definition Image Viewer with thumbnail preflight view
- Workflow Automation Templates
- Easily combine single or multi-page files from one or more file locations into a collate set - Drag/drop and cut/paste to reorder!
- Realtime access to manage print queue to maximize job priority with live printer status
- Control image scaling by percentage or single click automation to preferred page size
- Unlimited Site License - no servers or licensing required
- Area of Interest for image editing
- Drag/Drop or Cut/Paste file sets
- Live printer status at a glance



HD Viewer



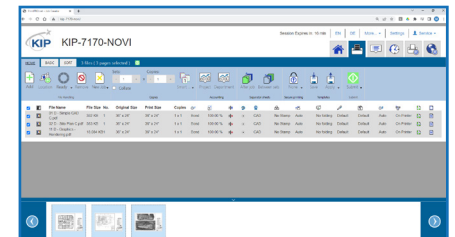
Area of Interest (AOI)



Pre Flight Thumbnail Viewer

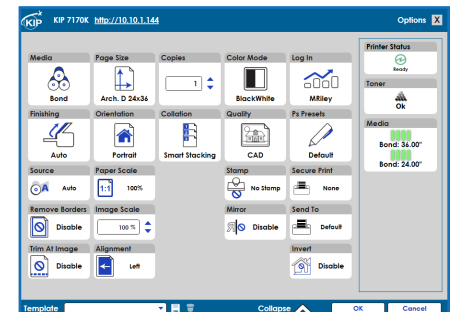
PrintPro.net - Fast with Best in Class Browser Feature Set

- Driverless Browser Printing
- Browser based print job submission tool. No application or installation required
- Supports Windows, Unix, and MAC OS browsers
- Excellent method for MAC OS users to have full control over printing parameters
- Remote printer administration and queue management
- Frees up PC, fast print job processing on KIP System K Controller
- Control image scaling by percentage or one touch automation to preferred page size
- Unlimited site license, no server or licensing required - best for small work groups



KIP Windows Driver - Quick with Best in Class Driver Feature Set

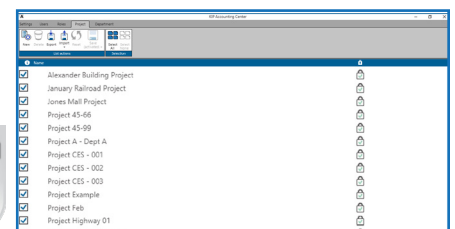
- Microsoft WHQL Certified
- 32 and 64 bit operating systems
- Windows 10/11
- Use from a variety of Windows based programs including Adobe, Office and CAD Applications
- Single Source Installation - No need to install multiple drivers
- Workflow Automation Templates
- Real-time Printer Status
- Easily view and manage Job Queue and Job History



KIP Accounting and Cost Center (Optional)

Track projects and printing costs. KIP Accounting allocates print and copy volumes to departments and projects. Easily, print or email visually attractive reports for copy, print and scan production directly from the application.

- Enhance print system access and security
- Track Copy/Scan/Printing
- Control user features including queue management (plus many more)
- LDAP import of user information



Stay Productive, Lower Cost and Stress

<i>Performance Category</i>	<i>Superior KIP Workgroup Solutions</i>	<i>Leading Inkjet Systems</i>
Spooling	Fast file processing at KIP controller	Slow spooling that ties up desktop pc
B/W Printing	Uses only black toner - no waste, lower cost	Up to 49% of a BW print is color ink, ink waste & higher cost
Software	KIP System K production software is included	Additional cost for production software
Scanning	KIP 2300 production scanner - unmatched technology	No production scanner
Supplies	High capacity, long lasting toner cartridges	Ink cartridges expire by date
Print Queue	Manage at PC, browser or touchscreen	Each page is managed at the printer via a small touchscreen
High Priority Jobs	Pause the KIP print queue to print high priority jobs	Feature not available
Media Installation	Easy < 1 minute, install paper and go	Challenging - several minutes, must wait at printer for "ok"
Media Savings	High density images on standard lower cost uncoated media	High density images require higher cost coated inkjet media
Image Durability	Highest - instantly dry, waterproof, highlighter safe, sun resistant	Low, damp, dry-time, ink smears, fades in the sun
Print Heads	Permanent - no replacement required, lower cost	Higher Cost - 8 print heads total
Speed	Always 14 per minute 840 prints per hour	Up to 35% slower - Print Pause Clean Restart
Project Reporting	KIP Accounting - superior project reporting	Higher cost and less capability



KIP CONTINUES TO SET THE BENCHMARK FOR PRODUCT SUPPORT AND CUSTOMER CARE EXCELLENCE

Schedule live instructor led virtual operator training from KIP product specialists for current and new employees

- Smart tablet style touchscreen operation
- Print system reliability you can count on
- KIP System K Software Suite offers unmatched productivity for printing projects
- Simple media end cap design that is easy for all operators to change media
- Touchscreen access to color pictorial how to use feature guides
- QR code access to pictorial and video how to use feature guide
- Touchscreen communicates in 12 languages, linked to User login
- Anywhere, anytime remote access for employees that work from home or from the project site
- Stay on budget - KIP Accounting and Cost Center reporting for project
- Cloud based scanning and printing for global project collaboration
- KIP print system status for anytime, anywhere system monitoring
- Control queue management, and reprint from job history without leaving your PC
- Easy scanned file renaming for document management system
- Easily adjust the machine's warm and cold sleep timers, or set your preferred wake and sleep time using event timers

KIP CUSTOMER CARE CENTER - KC3@KIP.COM

79 G SERIES SPECIFICATIONS



General

Description	Monochrome wide format print/copy/scan with color scanner
Type	Electrophotography (LED) with organic photoconductor (OPC) and closed toner system
Range of Productivity	14 D per minute / 840 prints per hour
Warm Up Time (from cold)	Less than 2 minutes from standby
Configuration	Printer / MFP
Roll Options	4 Roll
Output Delivery	Top / Optional Rear
Dimensions	67" (w) x 33" (d) x 59" (h) / 1702 mm x 835 mm x 1500 mm
Weight	MFP (4 Roll) 915 lb. / 415 kg Printer (4 Roll) 860 lb. / 390 kg
Electrical Requirements	220V-240V +6% or -10%, 50/60Hz, 13A
Power Consumption (Standby)	1,100W
Power Consumption (Printing)	<2,650W
Power Consumption (Sleep)	<7W

Printer

Print Resolution	600 dpi x 2400 dpi
Roll Capacity	4 Roll
Output Sizes Width	11" - 36"
Output Sizes Length	20' / 6 m (standard), 500'/150 m based on media validation
Media Types	Bond 18-24 lb., Vellum/Translucent Bond 18-20 lb., Film 3.5 - 4 mil

Controller

Controller Type	KIP System K Controller with Microsoft® IoT Enterprise
Memory	2GB DDR3 Standard - Upgradeable to 4 GB
SSD	Minimum 320 GB - Unlimited Upgrade
Supported File Type	DWF, PDF, PDF-A, HPGL 1/2, HP-RTL, Calcomp 906/907, CALS Group 4, TIFF Group 4, CIT/TG4, Grayscale TIFF, TIFF Packbits, PNG, JPEG

Scanner

Scanner Type	CIS / CCD
Scan Resolution	600 dpi
Scan Format	TIFF, Multipage TIFF, PDF, PDF-A, Multipage PDF, DWF, JPEG
Scan Destination	Local USB (removable media), Mailboxes (local), SMB, FTP, Cloud, Email
Original Size Width	11" - 36" / 210 mm to 914 mm
Original Thickness	0.05 mm - 1.60 mm (image quality over 0.25 mm not guaranteed)



Scan to watch videos & get more KIP 79 G Series info
or visit: www.KIP.com/79



KIP is a registered trademark of the KIP Group. All other product names mentioned herein are trademarks of their respective companies.
All product features and specifications are subject to change without notice. Complete product specifications are available at www.kip.com. © 2023

V01/23/24